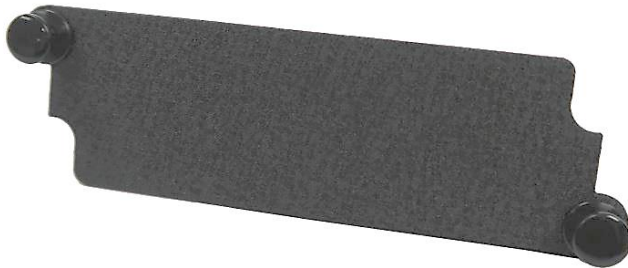


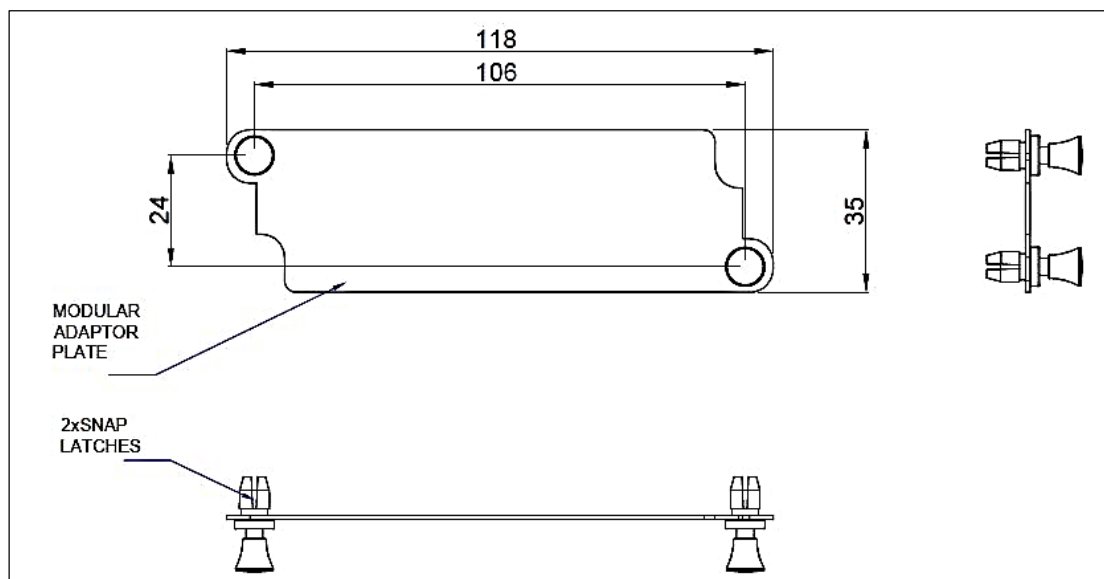
UC 1 Slot Blank Front Panel



(Only for reference)

- SPCC Steel (Cold rolled steel Plate), thickness 1.2mm
- Powder coating (water mark)
- Compatible with UC9500 Series Patch Panels, i.e. PP9510, PP9515, PP9520 and PP9540

Construction



Ordering Information

UC Part Number	SAP1C	Description	Weight (g)	Packaging
PPA9515-0	YAPBP02679	DRAKA UCCONNECT FIBRE OPTIC FRONT PANEL PP9500 FLAT 1 SLOT 1U BLANK INSERT ADAPTOR TYPE	40	10 pcs per box
Related Products				
PP9510	YPMBP02543	DRAKA UCCONNECT FIBRE OPTIC PATCH PANEL FLAT TYPE 19" 1U 4 SLOT EMPTY BLACK UC9500 SERIES	3260	1 set / box
PP9515	YPMBP02913	DRAKA UCCONNECT FIBRE OPTIC PATCH PANEL DRAWER TYPE 19" 1U 4 SLOT EMPTY BLACK UC9500 SERIES	4000	1 set / box
PP9520	YPMBP02671	DRAKA UCCONNECT FIBRE OPTIC PATCH PANEL FLAT TYPE 19" 2U 8 SLOT EMPTY BLACK UC9500 SERIES	6000	1 set / box
PP9540	YPMBP03196	DRAKA UCCONNECT UC9500 SERIES FIBRE OPTIC PATCH PANEL FLAT TYPE 19" 4U 12 SLOT EMPTY BLACK	6000	1 set / box

Enquiries

Please contact our local sales office or email to: mms.asia@prysmiangroup.com

Multimedia Solutions is the data communication portfolio of Prysmian Group and comprises all the necessary portfolio of cable solutions for data communication.

Ask about UC CONNECT for a complete Structured Cabling Solutions with 25 Years System Warranty.

Visit www.drakauc.com for more information.

© PRYSMIAN GROUP 2022, All Rights Reserved

All sizes and values without tolerances are reference values. Specifications are for product as supplied by Prysmian Group: any modification or alteration afterwards of product may give different result.

The information contained within this document must not be copied, reprinted or reproduced in any form, either wholly or in part, without the written consent of Prysmian Group. The information is believed to be correct at the time of issue. Prysmian Group reserves the right to amend this specification without prior notice. This specification is not contractually valid unless specifically authorised by Prysmian Group.

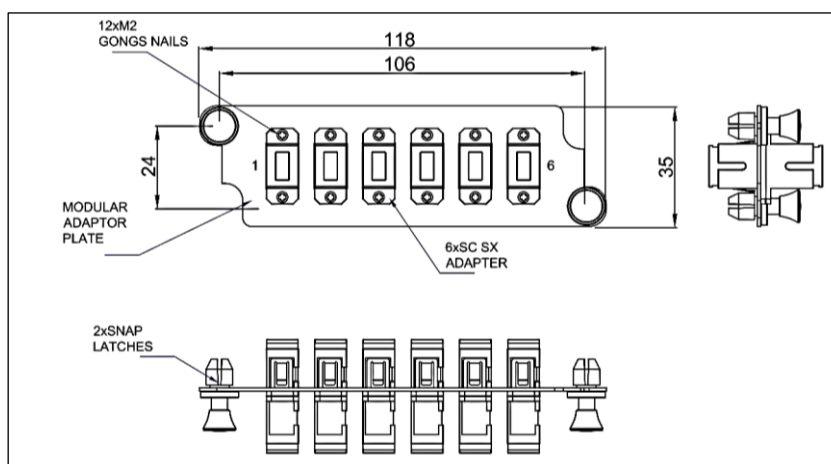
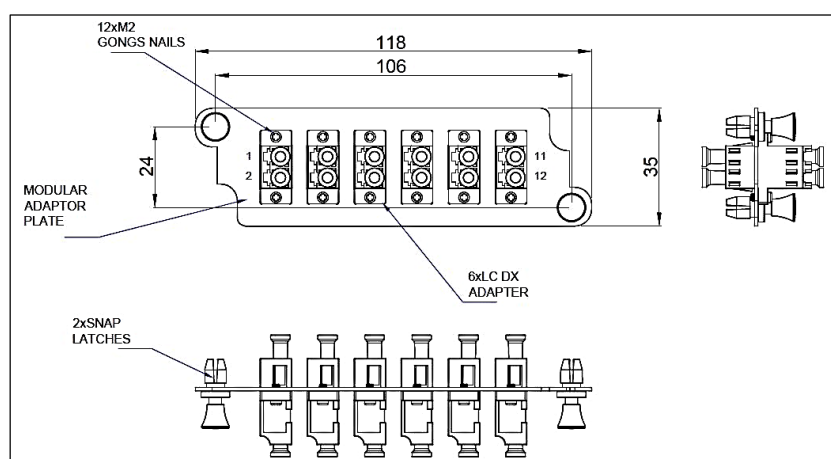
UC 6-Port LC Duplex / SC Simplex Front Panel



(Only for reference)

- SPCC Steel (Cold rolled steel Plate), thickness 1.2mm
- Powder coating (water mark)
- Available in empty and pre-assembled form
- Compatible with UC9500 Series Patch Panels, i.e. PP9510, PP9515, PP9520 and PP9540
- Coupler Sleeve: Zirconia

Construction



Ordering Information

UC Part Number	SAP1C	Description	Weight (g)	Packaging
PPA9514-6	YAPBP02645	DRAKA UCCONNECT FIBRE OPTIC FRONT PANEL PP9500 FLAT 1 SLOT 1U EMPTY BLACK 6 PORT LC DUPLEX / SC SIMPLEX	28	10 pcs per box
PPA9514-6LCSM	YAPBP02672	DRAKA UCCONNECT FIBRE OPTIC FRONT PANEL PP9500 FLAT 1 SLOT 1U LOADED BLUE 6 PORT LC DUPLEX SM UPC	37	6 pcs per box
PPA9514-6LCM2	TBC	DRAKA UCCONNECT FIBRE OPTIC FRONT PANEL PP9500 FLAT 1 SLOT 1U LOADED BEIGE 6 PORT LC DUPLEX OM1 & OM2 UPC	37	6 pcs per box
PPA9514-6LCM3	YAPBP02674	DRAKA UCCONNECT FIBRE OPTIC FRONT PANEL PP9500 FLAT 1 SLOT 1U LOADED AQUA 6 PORT LC DUPLEX OM3 UPC	37	6 pcs per box
PPA9514-6LCM4	YAPBP02673	DRAKA UCCONNECT FIBRE OPTIC FRONT PANEL PP9500 FLAT 1 SLOT 1U LOADED VIOLET 6 PORT LC DUPLEX OM4 UPC	37	6 pcs per box
PPA9514-6SCSM	YAPBP02943	DRAKA UCCONNECT FIBRE OPTIC FRONT PANEL PP9500 FLAT 1 SLOT 1U LOADED BLUE 6 PORT SC SIMPLEX SM UPC	37	6 pcs per box
PPA9514-6SCSMA	YAPBP02944	DRAKA UCCONNECT FIBRE OPTIC FRONT PANEL PP9500 FLAT 1 SLOT 1U LOADED GREEN 6 PORT SC SIMPLEX SM APC	37	6 pcs per box
PPA9514-6SCM2	TBC	DRAKA UCCONNECT FIBRE OPTIC FRONT PANEL PP9500 FLAT 1 SLOT 1U LOADED BEIGE 6 PORT SC SIMPLEX OM1 & OM2 UPC	37	6 pcs per box
PPA9514-6SCM3	TBC	DRAKA UCCONNECT FIBRE OPTIC FRONT PANEL PP9500 FLAT 1 SLOT 1U LOADED AQUA 6 PORT SC SIMPLEX OM3 UPC	37	6 pcs per box
PPA9514-6SCM4	TBC	FIBRE OPTIC FRONT PANEL PP9500 FLAT 1 SLOT 1U LOADED VIOLET 6 PORT SC SIMPLEX OM4 UPC	37	6 pcs per box

UC Part Number	SAP1C	Description	Weight (g)	Packaging
Related Products				
PP9510	YPMBP02543	DRAKA UCCONNECT FIBRE OPTIC PATCH PANEL FLAT TYPE 19" 1U 4 SLOT EMPTY BLACK UC9500 SERIES	3260	1 set / box
PP9515	YPMBP02913	DRAKA UCCONNECT FIBRE OPTIC PATCH PANEL DRAWER TYPE 19" 1U 4 SLOT EMPTY BLACK UC9500 SERIES	4000	1 set / box
PP9520	YPMBP02671	DRAKA UCCONNECT FIBRE OPTIC PATCH PANEL FLAT TYPE 19" 2U 8 SLOT EMPTY BLACK UC9500 SERIES	6000	1 set / box
PP9540	YPMBP03196	DRAKA UCCONNECT UC9500 SERIES FIBRE OPTIC PATCH PANEL FLAT TYPE 19" 4U 12 SLOT EMPTY BLACK	6000	1 set / box

Enquiries

Please contact our local sales office or email to: mms.asia@prysmiangroup.com

Multimedia Solutions is the data communication portfolio of Prysmian Group and comprises all the necessary portfolio of cable solutions for data communication.

Ask about UC CONNECT for a complete Structured Cabling Solutions with 25 Years System Warranty.

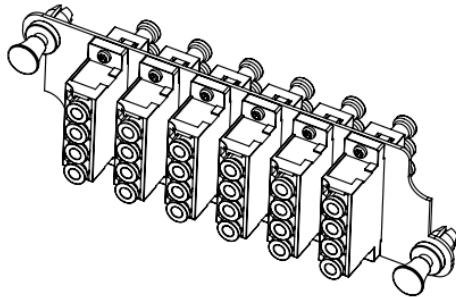
Visit www.drakauc.com for more information.

© PRYSMIAN GROUP 2022, All Rights Reserved

All sizes and values without tolerances are reference values. Specifications are for product as supplied by Prysmian Group: any modification or alteration afterwards of product may give different result.

The information contained within this document must not be copied, reprinted or reproduced in any form, either wholly or in part, without the written consent of Prysmian Group. The information is believed to be correct at the time of issue. Prysmian Group reserves the right to amend this specification without prior notice. This specification is not contractually valid unless specifically authorised by Prysmian Group.

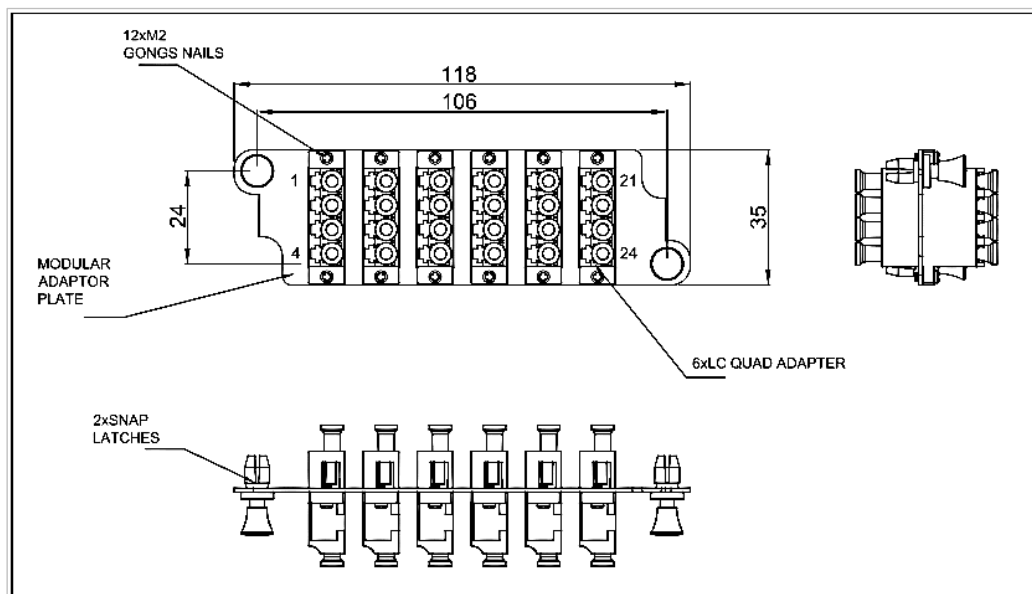
UC 6-Port LC Quadruplex Front Panel



(Only for reference)

- SPCC Steel (Cold rolled steel Plate), thickness 1.2mm
- Powder coating (water mark)
- Available in pre-assembled form
- Compatible with UC9500 Series Patch Panels, i.e. PP9510, PP9515, PP9520 and PP9540
- Coupler Sleeve: Zirconia

Construction



Ordering Information

UC Part Number	SAP1C	Description	Weight (g)	Packaging
PPA9517-6LCSM	TBC	UC9500 1 Slot 6-Port LC Quadruplex Front Panel with 6 SM adaptors	52	6 pcs per box
PPA9517-6LCM2	TBC	UC9500 1 Slot 6-Port LC Quadruplex Front Panel with 6 OM1 & OM2 adaptors	52	6 pcs per box
PPA9517-6LCM3	TBC	UC9500 1 Slot 6-Port LC Quadruplex Front Panel with 6 OM3 adaptors	52	6 pcs per box
PPA9517-6LCM4	TBC	UC9500 1 Slot 6-Port LC Quadruplex Front Panel with 6 OM4 adaptors	52	6 pcs per box
Related Products				
PP9510	YPMBP02543	DRAKA UCCONNECT FIBRE OPTIC PATCH PANEL FLAT TYPE 19" 1U 4 SLOT EMPTY BLACK UC9500 SERIES	3260	1 set / box
PP9515	YPMBP02913	DRAKA UCCONNECT FIBRE OPTIC PATCH PANEL DRAWER TYPE 19" 1U 4 SLOT EMPTY BLACK UC9500 SERIES	4000	1 set / box
PP9520	YPMBP02671	DRAKA UCCONNECT FIBRE OPTIC PATCH PANEL FLAT TYPE 19" 2U 8 SLOT EMPTY BLACK UC9500 SERIES	6000	1 set / box
PP9540	YPMBP03196	DRAKA UCCONNECT UC9500 SERIES FIBRE OPTIC PATCH PANEL FLAT TYPE 19" 4U 12 SLOT EMPTY BLACK	6000	1 set / box

Enquiries

Please contact our local sales office or email to: mms.asia@prysmiangroup.com

Multimedia Solutions is the data communication portfolio of Prysmian Group and comprises all the necessary portfolio of cable solutions for data communication.

Ask about UC CONNECT for a complete Structured Cabling Solutions with 25 Years System Warranty.

Visit www.drakauc.com for more information.

© PRYSMIAN GROUP 2022, All Rights Reserved

All sizes and values without tolerances are reference values. Specifications are for product as supplied by Prysmian Group: any modification or alteration afterwards of product may give different result.

The information contained within this document must not be copied, reprinted or reproduced in any form, either wholly or in part, without the written consent of Prysmian Group. The information is believed to be correct at the time of issue. Prysmian Group reserves the right to amend this specification without prior notice. This specification is not contractually valid unless specifically authorised by Prysmian Group.

Enquiries

Please contact our local sales office or email to: mms.asia@prysmiangroup.com

Multimedia Solutions is the data communication portfolio of Prysmian Group and comprises all the necessary portfolio of cable solutions for data communication.

Ask about UC CONNECT for a complete Structured Cabling Solutions with 25 Years System Warranty.

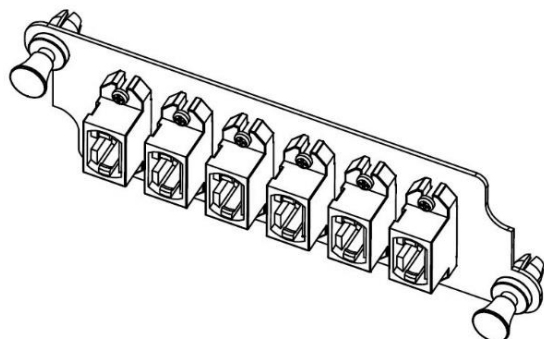
Visit www.drakauc.com for more information.

© PRYSMIAN GROUP 2022, All Rights Reserved

All sizes and values without tolerances are reference values. Specifications are for product as supplied by Prysmian Group: any modification or alteration afterwards of product may give different result.

The information contained within this document must not be copied, reprinted or reproduced in any form, either wholly or in part, without the written consent of Prysmian Group. The information is believed to be correct at the time of issue. Prysmian Group reserves the right to amend this specification without prior notice. This specification is not contractually valid unless specifically authorised by Prysmian Group.

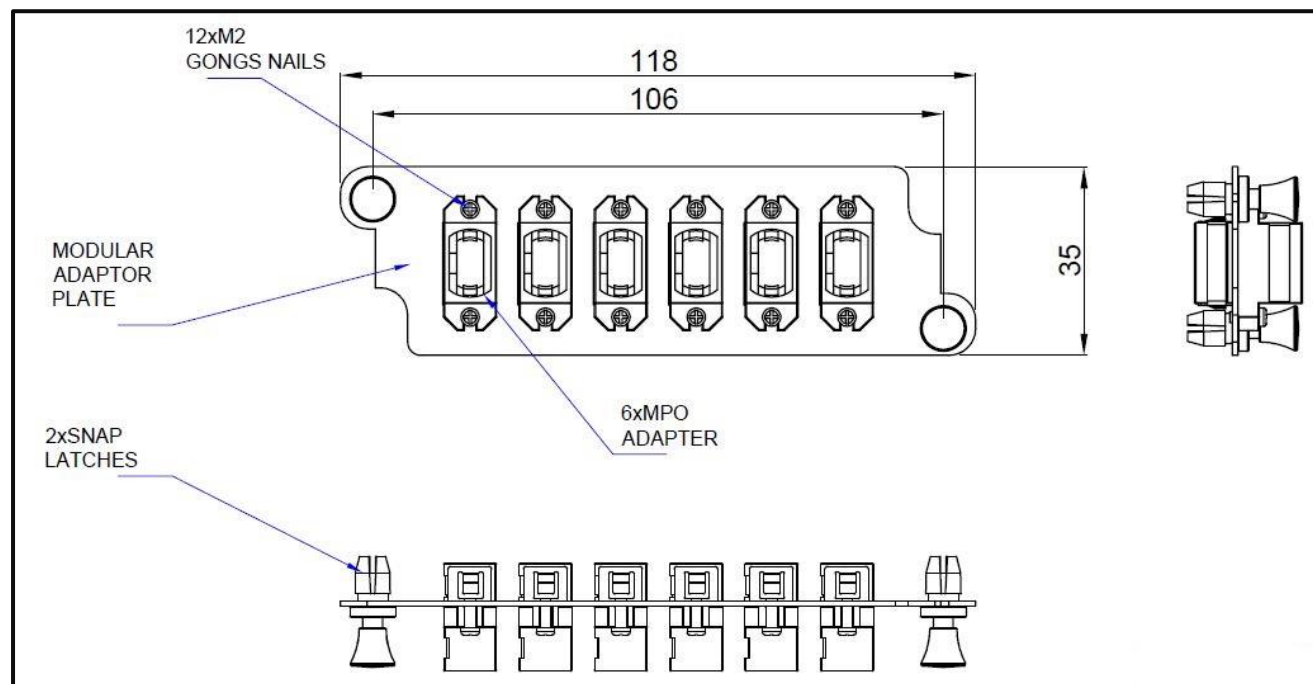
UC 6-Port MPO Adaptor Front Panel



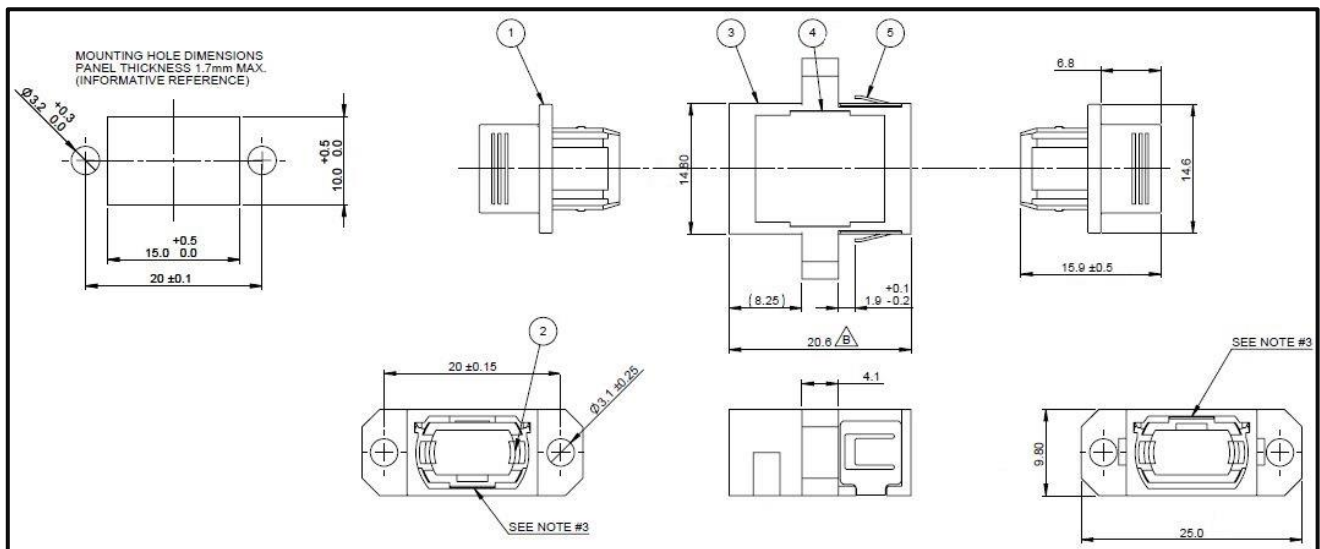
(Only for reference)

- SPCC Steel (Cold rolled steel Plate), thickness 1.2mm
- Powder coating (water mark)
- Compatible with UC9500 Series Patch Panels, i.e. PP9510, PP9515, PP9520 and PP9540

Construction



MPO Adaptor:



Ordering Information

UC Part Number	SAP1C	Description	Weight (g)	Packaging
PPA9516-6	TBC	DRAKA UCONNECT FIBRE OPTIC FRONT PANEL PP9500 FLAT 1 SLOT 1U EMPTY BLACK	12	10 pcs per box
PPA9516-6MA	TBC	DRAKA UCONNECT FIBRE OPTIC FRONT PANEL PP9500 FLAT 1 SLOT 1U LOADED BLACK 6 PORT MPO ADAPTOR TYPE A	50	6 pcs per box
PPA9516-6MB	TBC	DRAKA UCONNECT FIBRE OPTIC FRONT PANEL PP9500 FLAT 1 SLOT 1U LOADED BLACK 6 PORT MPO ADAPTOR TYPE B	50	6 pcs per box
Related Products				
PP9510	YPMBP02543	DRAKA UCONNECT FIBRE OPTIC PATCH PANEL FLAT TYPE 19" 1U 4 SLOT EMPTY BLACK UC9500 SERIES	3260	1 set / box
PP9515	YPMBP02913	DRAKA UCONNECT FIBRE OPTIC PATCH PANEL DRAWER TYPE 19" 1U 4 SLOT EMPTY BLACK UC9500 SERIES	4000	1 set / box
PP9520	YPMBP02671	DRAKA UCONNECT FIBRE OPTIC PATCH PANEL FLAT TYPE 19" 2U 8 SLOT EMPTY BLACK UC9500 SERIES	6000	1 set / box
PP9540	YPMBP03196	DRAKA UCONNECT FIBRE OPTIC PATCH PANEL FLAT TYPE 19" 4U 12 SLOT EMPTY BLACK UC9500 SERIES	6000	1 set / box

Enquiries

Please contact our local sales office or email to: mms.asia@prysmiangroup.com

Multimedia Solutions is the data communication portfolio of Prysmian Group and comprises all the necessary portfolio of cable solutions for data communication.

Ask about UC CONNECT for a complete Structured Cabling Solutions with 25 Years System Warranty.

Visit www.drakauc.com for more information.

© PRYSMIAN GROUP 2022, All Rights Reserved

All sizes and values without tolerances are reference values. Specifications are for product as supplied by Prysmian Group: any modification or alteration afterwards of product may give different result.

The information contained within this document must not be copied, reprinted or reproduced in any form, either wholly or in part, without the written consent of Prysmian Group. The information is believed to be correct at the time of issue. Prysmian Group reserves the right to amend this specification without prior notice. This specification is not contractually valid unless specifically authorised by Prysmian Group.

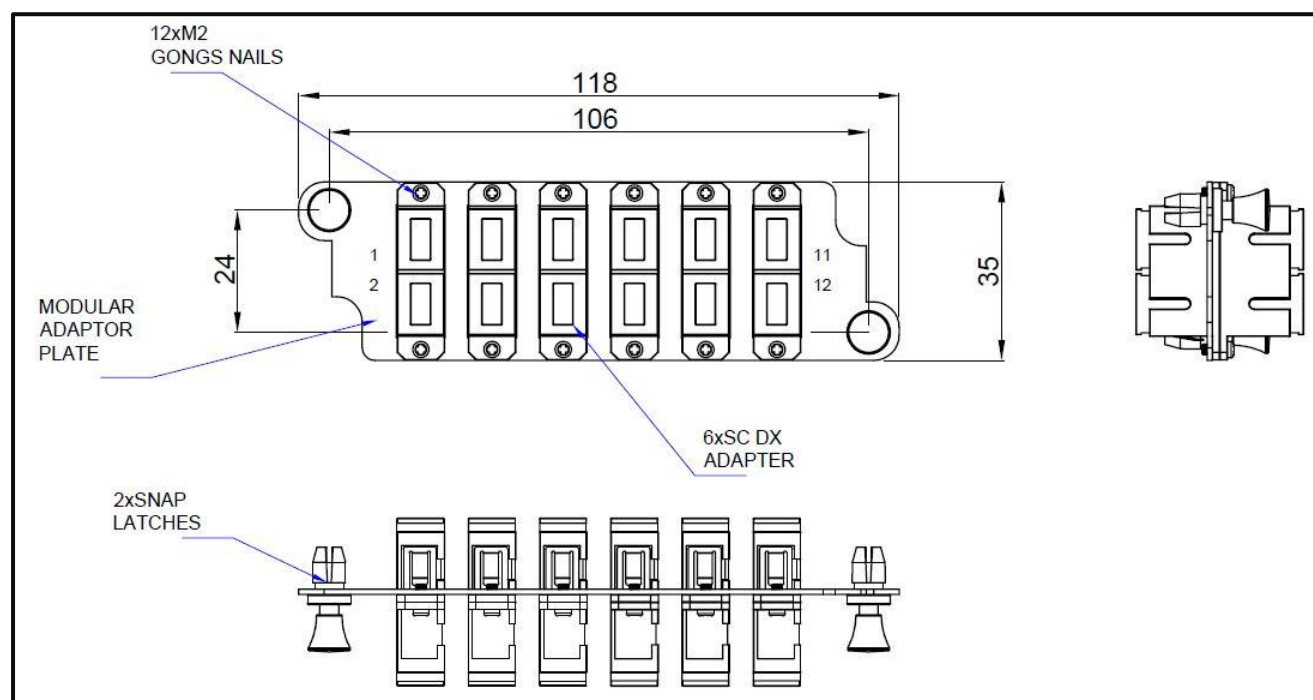
UC 6-Port SC Duplex Front Panel



(Only for reference)

- SPCC Steel (Cold rolled steel Plate), thickness 1.2mm
- Powder coating (water mark)
- Available in empty and pre-assembled form
- Compatible with UC9500 Series Patch Panels, i.e. PP9510, PP9515, PP9520 and PP9540
- Coupler Sleeve: Zirconia

Construction



Ordering Information

UC Part Number	SAP1C	Description	Weight (g)	Packaging
PPA9511-6	YAPBP02675	DRAKA UCCONNECT FIBRE OPTIC FRONT PANEL PP9500 FLAT 1 SLOT 1U EMPTY BLACK	28	10 pcs per box
PPA9511-6SM	YAPBP02676	DRAKA UCCONNECT FIBRE OPTIC FRONT PANEL PP9500 FLAT 1 SLOT 1U LOADED BLUE 6 PORT SC DUPLEX SM UPC	52	6 pcs per box
PPA9511-6SMA	YAPBP02945	DRAKA UCCONNECT FIBRE OPTIC FRONT PANEL PP9500 FLAT 1 SLOT 1U LOADED GREEN 6 PORT SC DUPLEX SM APC	52	6 pcs per box
PPA9511-6M2	TBC	DRAKA UCCONNECT FIBRE OPTIC FRONT PANEL PP9500 FLAT 1 SLOT 1U LOADED BEIGE 6 PORT SC DUPLEX OM1 & OM2 UPC	52	6 pcs per box
PPA9511-6M3	YAPBP02678	DRAKA UCCONNECT FIBRE OPTIC FRONT PANEL PP9500 FLAT 1 SLOT 1U LOADED AQUA 6 PORT SC DUPLEX OM3 UPC	52	6 pcs per box
PPA9511-6M4	YAPBP02677	DRAKA UCCONNECT FIBRE OPTIC FRONT PANEL PP9500 FLAT 1 SLOT 1U LOADED VIOLET 6 PORT SC DUPLEX OM4 UPC	52	6 pcs per box
Related Products				
PP9510	YPMBP02543	DRAKA UCCONNECT FIBRE OPTIC PATCH PANEL FLAT TYPE 19" 1U 4 SLOT EMPTY BLACK UC9500 SERIES	3260	1 set / box
PP9515	YPMBP02913	DRAKA UCCONNECT FIBRE OPTIC PATCH PANEL DRAWER TYPE 19" 1U 4 SLOT EMPTY BLACK UC9500 SERIES	4000	1 set / box
PP9520	YPMBP02671	DRAKA UCCONNECT FIBRE OPTIC PATCH PANEL FLAT TYPE 19" 2U 8 SLOT EMPTY BLACK UC9500 SERIES	6000	1 set / box
PP9540	YPMBP03196	DRAKA UCCONNECT FIBRE OPTIC PATCH PANEL FLAT TYPE 19" 4U 12 SLOT EMPTY BLACK UC9500 SERIES	6000	1 set / box

Enquiries

Please contact our local sales office or email to: mms.asia@prysmiangroup.com

Multimedia Solutions is the data communication portfolio of Prysmian Group and comprises all the necessary portfolio of cable solutions for data communication.

Ask about UC CONNECT for a complete Structured Cabling Solutions with 25 Years System Warranty.

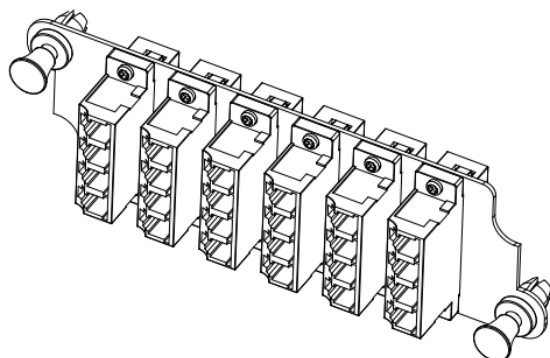
Visit www.drakauc.com for more information.

© PRYSMIAN GROUP 2022, All Rights Reserved

All sizes and values without tolerances are reference values. Specifications are for product as supplied by Prysmian Group: any modification or alteration afterwards of product may give different result.

The information contained within this document must not be copied, reprinted or reproduced in any form, either wholly or in part, without the written consent of Prysmian Group. The information is believed to be correct at the time of issue. Prysmian Group reserves the right to amend this specification without prior notice. This specification is not contractually valid unless specifically authorised by Prysmian Group.

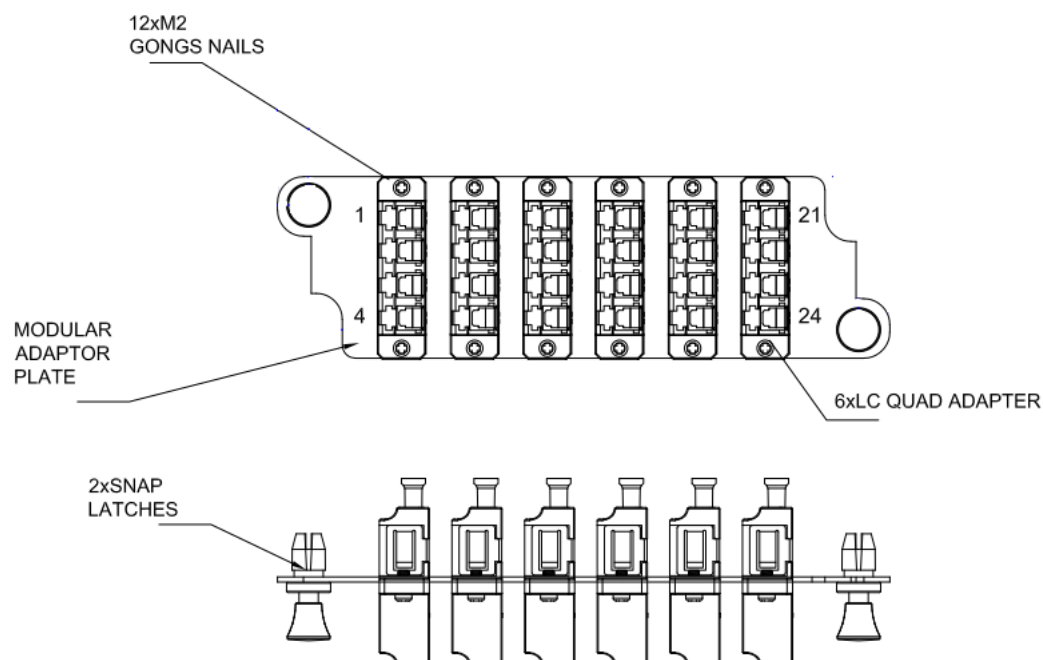
UC 6-Port Auto Shuttle LC Quadruplex Front Panel



(Only for reference)

- SPCC Steel (Cold rolled steel Plate), thickness 1.2mm
- Fingerprint resistant
- Available in pre-assembled form
- Compatible with UC9515 Patch Panel
- Coupler Sleeve: Zirconia

Construction



Ordering Information

UC Part Number	SAP1C	Description	Weight (g)	Packaging
PPA9524-6LCSM	TBC	UC9500 1 Slot 6-Port LC Quadruplex Front Panel with 6 SM Auto Shuttle Adaptors	52	6 pcs per box
PPA9524-6LCM4	TBC	UC9500 1 Slot 6-Port LC Quadruplex Front Panel with 6 OM4 Auto Shuttle Adaptors	52	6 pcs per box

Enquiries

Please contact our local sales office or email to: mms.asia@prysmiangroup.com

Multimedia Solutions is the data communication portfolio of Prysmian Group and comprises all the necessary portfolio of cable solutions for data communication.

Ask about UC CONNECT for a complete Structured Cabling Solutions with 25 Years System Warranty.

Visit www.drakauc.com for more information.

© PRYSMIAN GROUP 2022, All Rights Reserved

All sizes and values without tolerances are reference values. Specifications are for product as supplied by Prysmian Group: any modification or alteration afterwards of product may give different result.

The information contained within this document must not be copied, reprinted or reproduced in any form, either wholly or in part, without the written consent of Prysmian Group. The information is believed to be correct at the time of issue. Prysmian Group reserves the right to amend this specification without prior notice. This specification is not contractually valid unless specifically authorised by Prysmian Group.