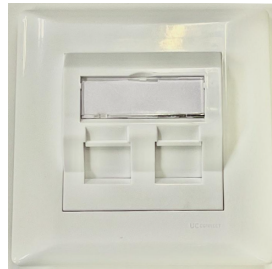


## Single and Dual Port Double Frame Face Plate



### General Specification

Flat type face plate

Angled insertion type

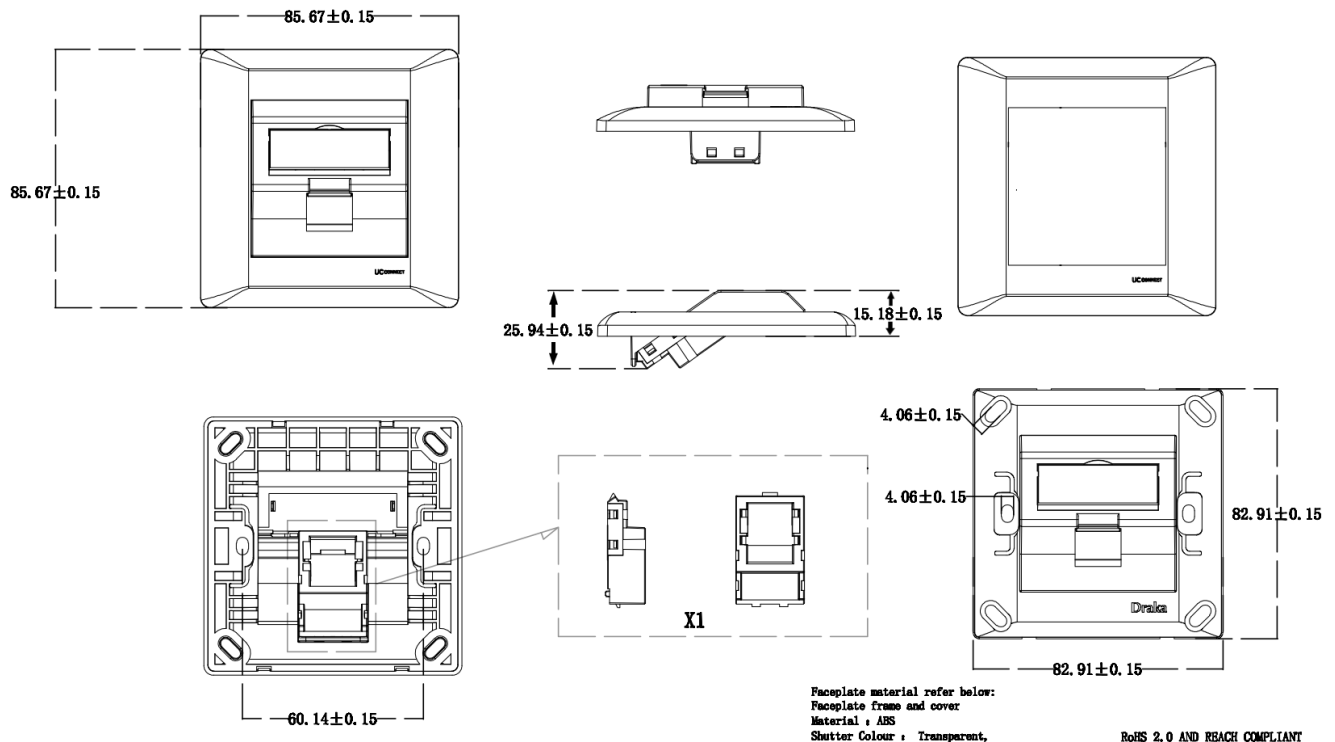
Support 1-port and 2-port

### Standards

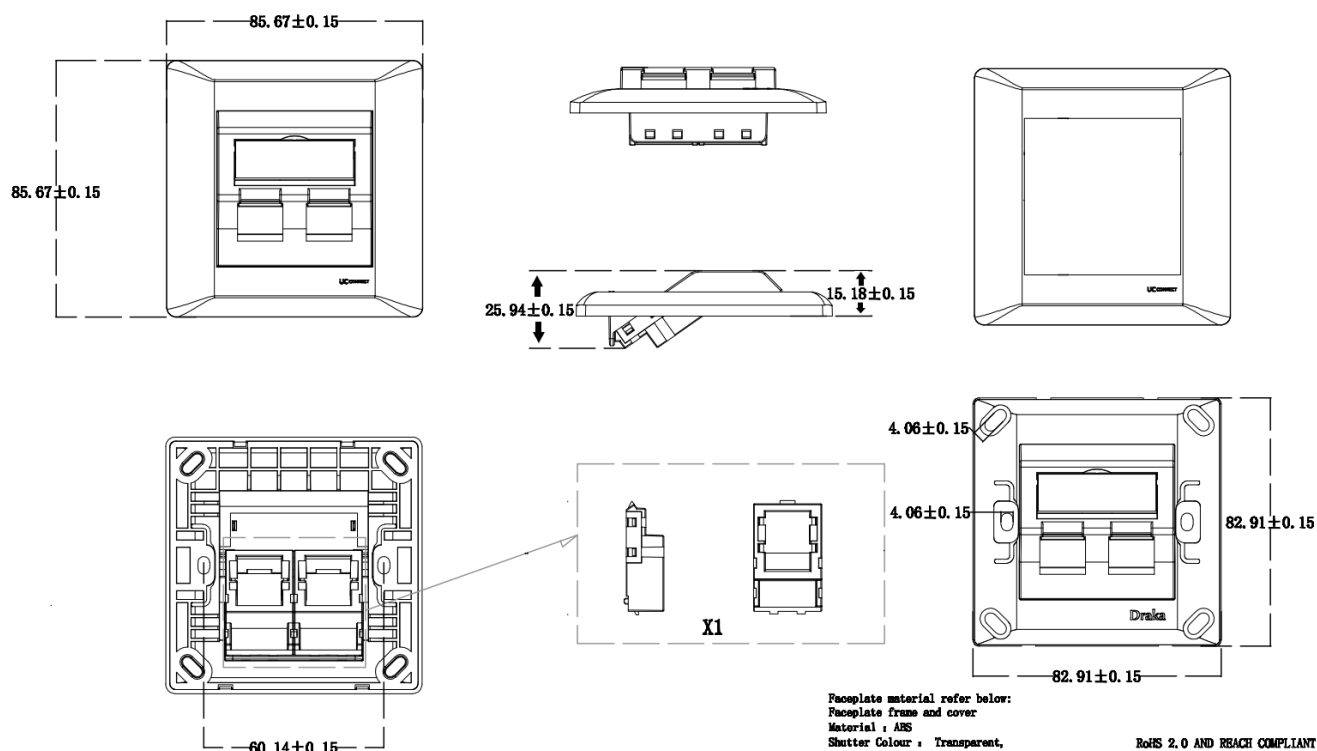
RoHS Compliant | REACH Compliant

### Construction

1-port



## 2-port



## Ordering Information

UC Part Number	SAP1C	Description	Weight (g)	Packaging
FPDF1P	TBC	DRAKA UCONNECT FACEPLATE 1-PORT DOUBLE FRAME ANGLED INSERTION TYPE 86X86 WHITE	30	1 pc / bag
FPDF2P	TBC	DRAKA UCONNECT FACEPLATE 2-PORT DOUBLE FRAME ANGLED INSERTION TYPE 86X86 WHITE	34	1 pc / bag

## Enquiries

---

Please contact our local sales office or email to: [mms.asia@prysmiangroup.com](mailto:mms.asia@prysmiangroup.com)

Multimedia Solutions is the data communication portfolio of Prysmian Group and comprises all the necessary portfolio of cable solutions for data communication.

Ask about UC CONNECT for a complete Structured Cabling Solutions with 25 Years System Warranty.

Visit [www.drakauc.com](http://www.drakauc.com) for more information.

---

© PRYSMIAN GROUP 2022, All Rights Reserved

All sizes and values without tolerances are reference values. Specifications are for product as supplied by Prysmian Group: any modification or alteration afterwards of product may give different result.

The information contained within this document must not be copied, reprinted or reproduced in any form, either wholly or in part, without the written consent of Prysmian Group. The information is believed to be correct at the time of issue. Prysmian Group reserves the right to amend this specification without prior notice. This specification is not contractually valid unless specifically authorised by Prysmian Group.